



Mode of Transportation to School in a

Rural, Northern Ontario Community



How Children Get to School



80%



13%



7%

Based on parental reporting from a School Travel Planning Survey.

BUS RIDE

EXPERIENCES

- Students get restless and loud.
- Some children ride the school bus for over an hour each way.
- Young students learn poor behaviours from older students.



Challenges



SPEEDING
MOTORISTS



BULLYING



HIGH
TRAFFIC



STRANGERS



LACK OF
SIDEWALKS

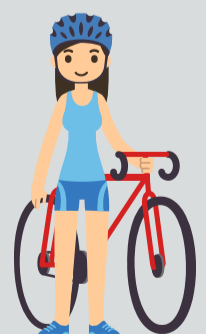


POOR WINTER
MAINTENANCE

Parents report lack of neighbourhood safety and poor infrastructure as barriers to supporting active transportation to school for their children.

FUTURE DIRECTIONS

- Creative solutions are required to enhance the ability of all students to engage in active transportation to school, and reduce unpleasant commuting experiences.
- A modified walking school bus for those living far distances from the school might also increase physical activity and reduce the amount of time children spend on the bus.



Psychology of Physical Activity &
Health Promotion Lab
School of Physical & Health Education
ppahp.nipissingu.ca

